

# **BALDOR® • RELIANCE**

## **Product Information Packet**

### **PFTG50XP**

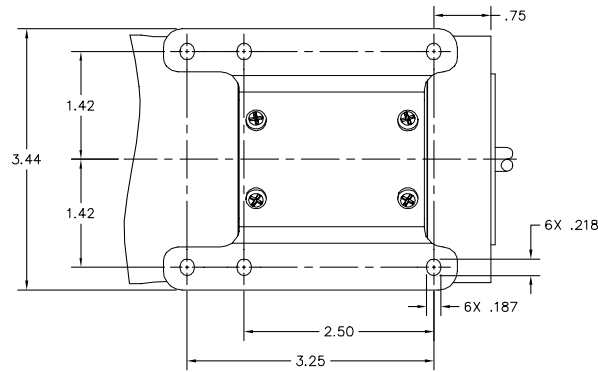
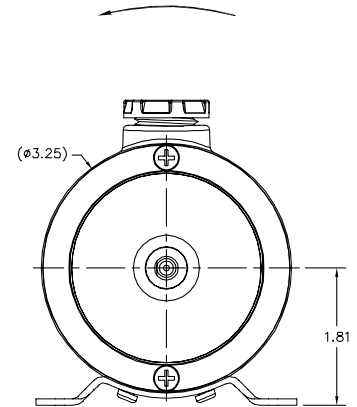
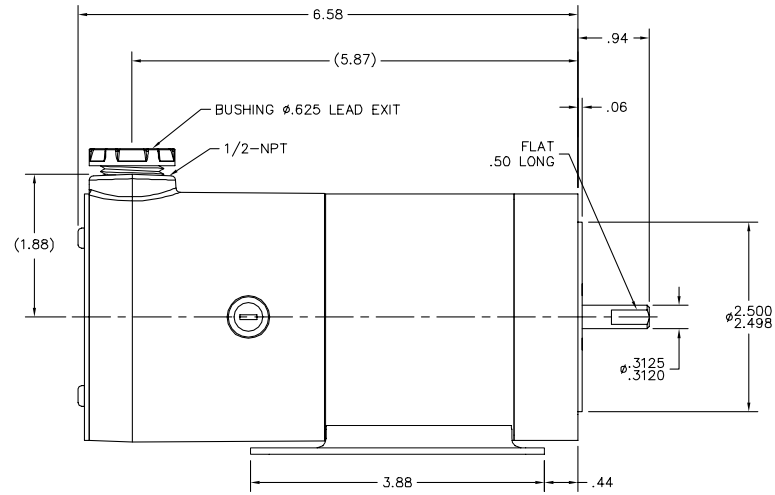
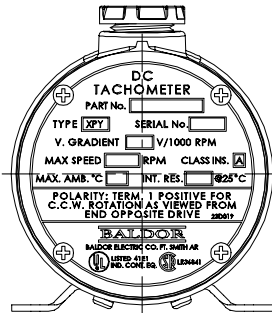
**DC TACH XPY 50VDC/KRPM**

Product Detail							
Revision:	AK	Status:	PRD/A	Change #:		Proprietary:	No
Type:	DC	Prod Type:		Elec. Spec:	X5WGZ002	CD Diagram:	CD0194
Enclosure		Mfg Plant:		Mech Spec:		Layout:	P601A101
Frame:	XPYTACH	Mounting:		Poles:	///	Created Date:	
Base:		Rotation:		Insulation:	F	Eff. Date:	08-06-2009
Leads:		Literature:		Elec. Diagram:		Replaced By:	

<b>Parts List</b>			
<b>Product ID</b>	<b>Description</b>	<b>Quantity</b>	<b>List Price</b>
X5CA0002	KE 50 V 54 T #31	1.000	17.00
X5EP2100A04	EP,XPY DE CL 6608 BRG SHLDR 3.25 OD	1.000	102.00
BMH1739	WASHER,PREC .860"X.502"X .005"	1.000	2.00
X5SH0001A01	SHAFT,XPY X512 .313 .94 .50LG FLAT (R	1.000	39.00
BG6608E03	608 D SL,C3,POLYREX EM	2.000	8.00
HA1084A01	SPACER,7/16"X.316"X1/8" STERLING BMH159	2.000	2.00
X5AL2130	LAM,ARM 13 SLOT XPY TACH TEMPEL #1291 (R	1.500	16.00
MG3000N01	3M 260 HYSOL EPOXY POWDERGREEN (REF 19D0	0.010	109.00
MG1000B41	PAINT 945-01 WATERBASE ROTOR LAC.	0.010	
CM1114	COMMUTATOR,52 BAR (REF 16D029)	1.000	64.00
ME3009A01	TIE, THREAD 4 STRND COTTON BEH1666	0.001	123.00
MG5022	VARNISH STAR WARS PD GEORGE RESIN (6180)	0.001	205.00
MG5022Z01	STAR WARS ACTIVATOR 103-001 PDG	0.001	53.00
PM1115A01	MAGNET 24 FRAME & '70S L=1.500 (.25 THI	1.000	417.00
X5EP2101A04	EP,XPY ODE CL 6608 W/ BASE MTG	1.000	145.00
HW5100A38	WAVY WASHER (W0855-010) 608 BRG(22MM)	1.000	3.00
BMH1741	WASHER,PREC .860"X.502" X.010"	4.000	3.00
BP4541	BRUSH HOLDER XPY TACH (REF 26D004)	2.000	9.00
80XN0632J03	SCREW, 6-32 X 3/16", SHS, AS	2.000	3.00
MJ5004A25	LOCTITE #222 SCREWLOCK	0.002	182.00
BP5118AK01SP	BRUSH,XPY GR B1250 1/4 X 1/8 (REF 15D048	1.000	92.00
BP4515SP	BRUSH CAP	1.000	3.00
TB0250A01	ASM,XPY TERMINAL BOARD (REF 4A035)	1.000	18.00
15XN0632A04	SCREW, 6/32 X 1/4" PAN, PHIL, M.S.	1.000	

<b>Parts List (continued)</b>			
<b>Product ID</b>	<b>Description</b>	<b>Quantity</b>	<b>List Price</b>
HA3193C01	STUD,BRASS #6-32 X .625 (REF 1D097)	1.000	2.00
XY0632B01	NUT,6-32 HEX BRASS (REF 1D020)	2.000	2.00
WD4139	BUSHING,O-Z/GEDNEY BB50 UL #E-20933 (REF	1.000	20.00
15XN0832A48	SCREW PAN HD #8-32 X 3 (PHILLIPS)	2.000	2.00
PM1117A01	SHUNT,MAGNET FLUX STEEL XPY (REF 32D001)	2.000	3.00
MJ5002A01	SILICON RUBBER SEALANT, 732CL 10.3 OZ TU	0.010	38.00
X5CV4000A00	CV,XPY MAGNET COVER/BAND (REF 6D006)	1.000	24.00
27D008	BASE MOUNTING FOR XPY TACHOMETER	1.000	17.00
15XN0632A04	SCREW, 6/32 X 1/4" PAN, PHIL, M.S.	4.000	
23D019-4	TACH LABEL XPY 50 VOLTS FOOT MOUNT	1.000	27.00
15XN0632A04	SCREW, 6/32 X 1/4" PAN, PHIL, M.S.	4.000	
MG1000G28SPP	S-9282E CHARCOAL GREY 5GAHAZARDIOUS CHEM	0.030	276.00
MP1002A17	POLY.BAG 6X4.5X15X1.5MIL (REF YY6X4X15)	1.000	2.00
CPA1000	PACKING GROUP STD. SINGLE	1.000	9.00
BEC-LB-65	CARTON LABEL FOR TACH	1.000	2.00
LT0063A00	INSTR.,TACHOMETER SERVICE	1.000	

P601A101



- NOTES:
1. CCW ROTATION WHEN VIEWED FROM DRIVE END; TERMINAL 2 (+) TERMINAL 1 (-)
  2. FOR MAX. ACCURACY (LINERITY), GENERATORS MUST BE RUN AT VERY LOW LOADS.
  3. REVERSING ERROR FOR ALL UNITS LESS THAN 2%.

CUSTOMER IS RESPONSIBLE FOR DETERMINING THAT MOTOR PERFORMANCE IS SUITABLE IN THE APPLICATION.

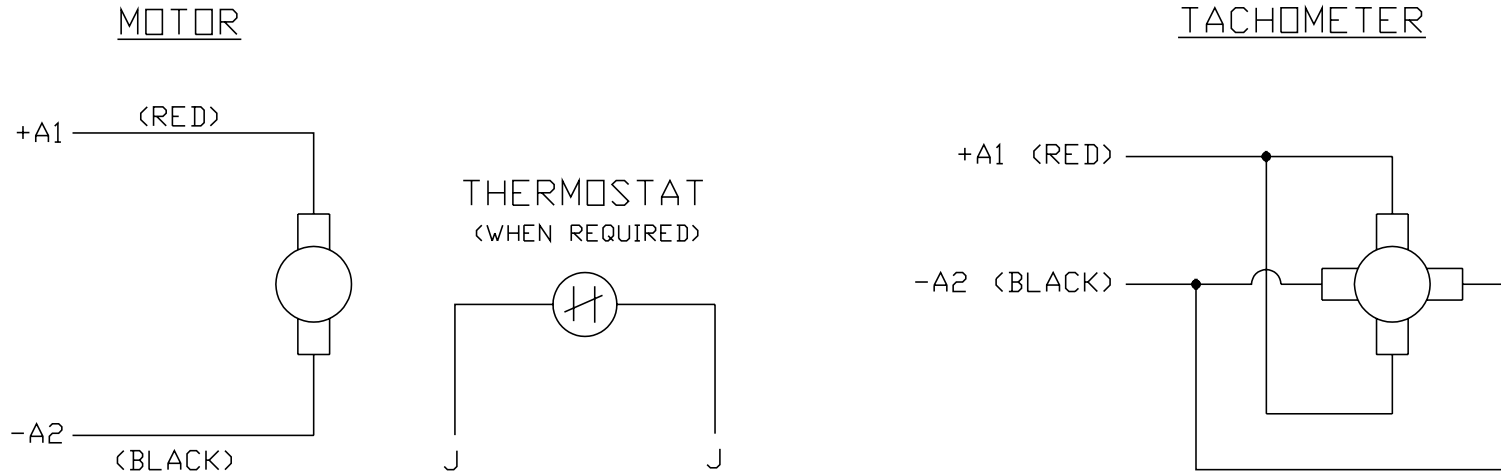
REV. DESC: NEW	VERSION: 00	TDR: 000000439019
REV. LTR: -	REVISED: 10; 34:15 07/30/2007	BY: CKWNB0
FILE: \CKA\00032\640		
MTL: -		

**Baldor • Dodge • Reliance**

LY,TACH XPY W/BASE

P601A101

CD0194



NOTES:

1. CCW ROTATION AS SHOWN FACING COMMUTATOR END. TO REVERSE MOTOR ROTATION OR TACHOMETER OUTPUT POLARITY INTERCHANGE LEADS A1(RED) & A2(BLACK)
2. LEAD COLORS FOR REFERENCE ONLY & NOT SPECIFIED BY THIS DRAWING. LEAD COLORS SPECIFIED BY LAYOUT DRAWING & BILL OF MATERIAL ONLY.

MATL: -			
REV:	E	ADDED NOTE "LEAD COLORS FOR REFERENCE ONLY &..."	
761000		SCALE: -	BY: CK
CD0194		REVISD: 07/28/95	TDR: 0078737
		FILE: AAA00004503	

**BALDOR ELECTRIC Co.**

CD TYPE P DC PERMANENT MAGNET MOTORS AND TACHOMETERS

CD0194